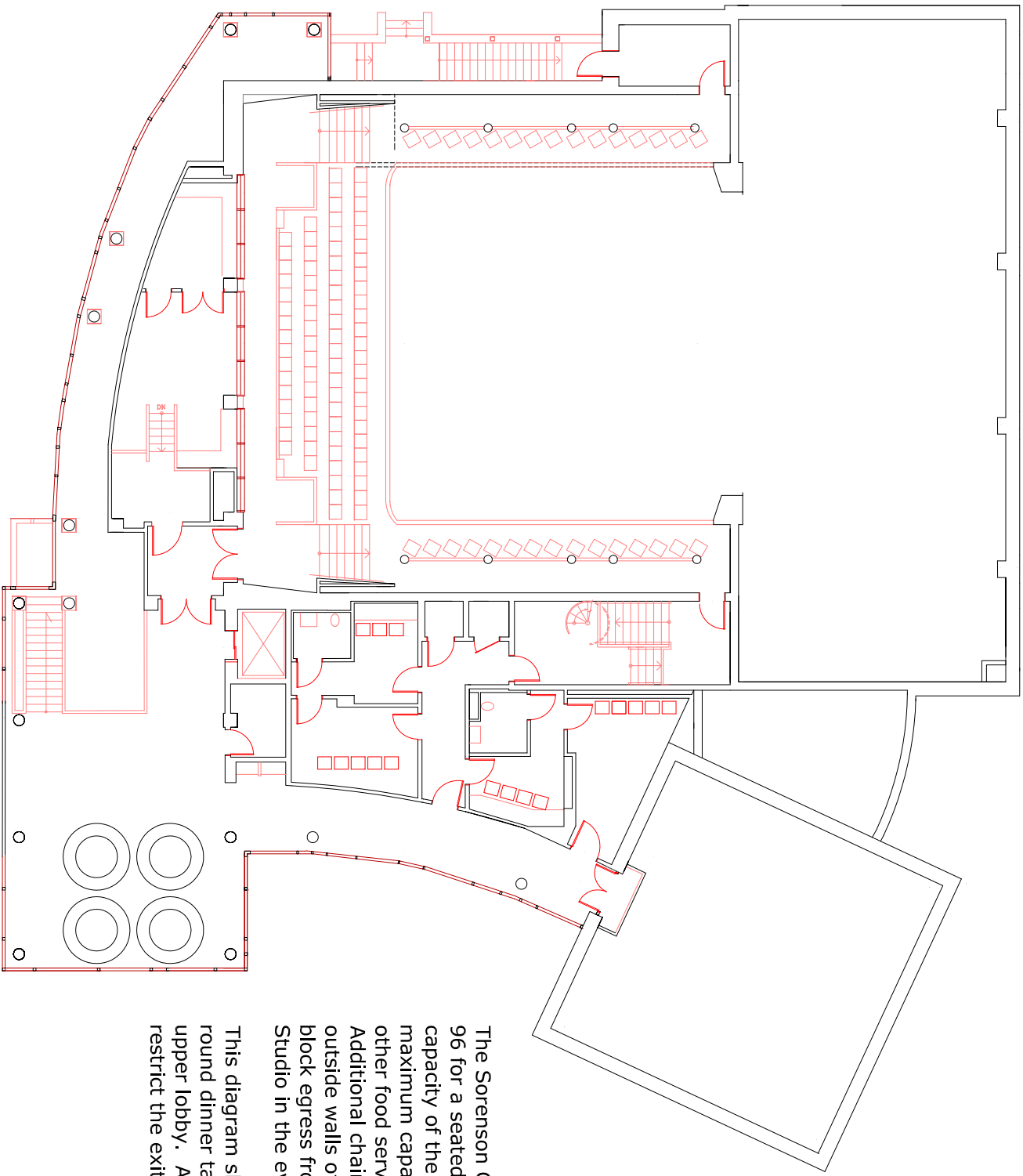


The Sorenson Center can seat a **maximum** of 96 for a seated dinner with catering. Maximum capacity of the Rehearsal Studio is 64, and maximum capacity of the upper lobby is 32. All other food service must be buffet style. Additional chairs may be spread around the outside walls of the theatre as long as they do not block egress to and from the Theatre or the Rehearsal Studio in the event of an emergency.

This diagram shows the placement of the 8 round dinner tables (8 guests per table) in the rehearsal studio, with catering stations. Removal of the catering stations does not increase the capacity of the Rehearsal Studio. These numbers have been set by the City of Wellesley's fire department.



The Sorenson Center can seat a **maximum** of 96 for a seated dinner with catering. Maximum capacity of the Rehearsal Studio is 64, and maximum capacity of the upper lobby is 32. All other food service must be buffet style. Additional chairs may be spread around the outside walls of the lobby as long as they do not block egress from the Theatre or the Rehearsal Studio in the event of an emergency.

This diagram shows the placement of the 4 round dinner tables (8 guests per table) in the upper lobby. Any larger numbers of tables restrict the exits from the balcony of the theatre.